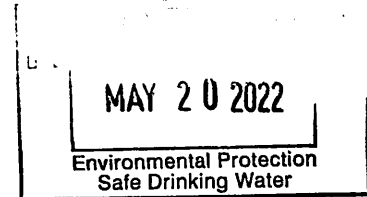


May 19, 2022

Brendon Grant
Supervisor, Professional Engineer IV, Vulnerability Assessment
Nevada Department of Environmental Protection
Bureau of Safe Drinking Water
901 S. Stewart Street, Suite 4001
Carson City, NV 89701



Re: Humboldt County/Grass Valley Sewer System Replacement Project

Dear Mr. Grant;

Farr West Engineering, on behalf of Humboldt County, is preparing a Preliminary Environmental Assessment for the Grass Valley Sewer System Replacement Project. The project planning area is west of the Sonoma Range and southeast of the Humboldt River, known as Grass Valley, and includes two rural subdivisions south of the City of Winnemucca: Star City Properties and Gold Country Estates. The project area also includes commercial areas north of the Winnemucca Municipal Airport and an area south of Grass Valley Elementary between Mary Way and Johnson Lane. The Grass Valley community is dependent on septic systems for sewer services and has multiple operating water systems. The impacts to public health and groundwater quality caused by high nitrate levels are the primary needs for this project.

The proposed project includes construction of a sanitary sewer collection system, a mechanical treatment facility, and rapid infiltration basins (RIBs). The sanitary sewer collection system will be installed in the project area and connected to existing residential and commercial sewer systems. The new wastewater treatment facility (WWTF) is planned to be located northwest of Winnemucca Municipal Airport.

The project will be located within portions of sections 10, 11, 12, 13, 14, and 15 Township 35N, Range 37E, including approximately 144 acres of possible disturbance, much of which is previously disturbed. Actual disturbance will be less, the exact location of which will be dependent on placement of the WWTP facility. This Preliminary Environmental Assessment is required due to Humboldt County's application for federal financing of this project.

Enclosed is a Project Location Figure that depicts the project area for all construction activities proposed by this project.

Project components include:

- a. Wastewater Treatment Facility
- b. Approximately four (4) Rapid Infiltration Basins (RIBs)
- c. Collection System including:
 - a. Gravity sewer mains, approximately 61,417 linear feet (LF) consisting of:
 - i. Approximately 45,092 LF of 8" PVC SDR 35
 - ii. Approximately 6,026 LF of 10" PVC SDR 35
 - iii. Approximately 5,552 LF of 12" PVC SDR 35

FARR WEST

ENGINEERING

- iv. Approximately 2,344 LF of 15" PVC SDR 35
- v. Approximately 2,403 LF of 18" PVC SDR 35
- b. Sewer laterals, approximately 631 connections
- c. Force mains, approximately 6,264 LF of 8" PVC C900
- d. Sewer manholes, approximately 188 consisting of:
 - i. Approximately 184 Type 1-A 48" Manholes
 - ii. Approximately 4 Type III 48" Manholes
- e. Four Lift Stations
 - i. Lift Station 1: Located at the intersection of Saturn Street and Jupiter Street
 - ii. Lift Station 2: Located at the North end of Venus Street
 - iii. Lift Station 3: Located at the intersection of Stratus Street and Placer Way
 - iv. Lift Station 4: Located preceding the treatment facility
- f. Abandonment and cleanout of approximately 631 existing septic tanks

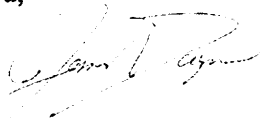
The affected areas are located as follows:

Project Component	Township and Range	Section
WWTF	T35N, R37E	Section 10, 15
Rapid Infiltration Basins	T35N, R37E	Section 10, 15
Collection System	T35N, R37E	Sections 11, 12, 13, 14, & 15
Lift stations	T35N, R37E	Sections 10, 11, 12 & 15

Humboldt County, Farr West, and partnering agencies, are committed to complying with federal requirements and Executive Orders that apply to state and federal financial assistance. I am contacting you to ensure this project complies with applicable regulations and policies under your agency's jurisdiction. We are also requesting information on the possible effects of the above proposed project in which the Bureau determines if the project will have any negative environmental impact and/or any other potential effects regarding safe drinking water. We would appreciate any recommendations you have to minimize or avoid these effects. We also seek your assessment of the compatibility of the proposed project with State, Local, and Federal government or any private programs and policies regarding the environmental impacts of construction within the proposed project area.

We would appreciate a response within 30 days. If you need further information or wish to discuss the project, please contact Jessica Dugan of Farr West Engineering at (775) 997-7495.

Thank you,



Jessica L. Dugan, M.S., J.D.
Regulatory and Environmental Specialist

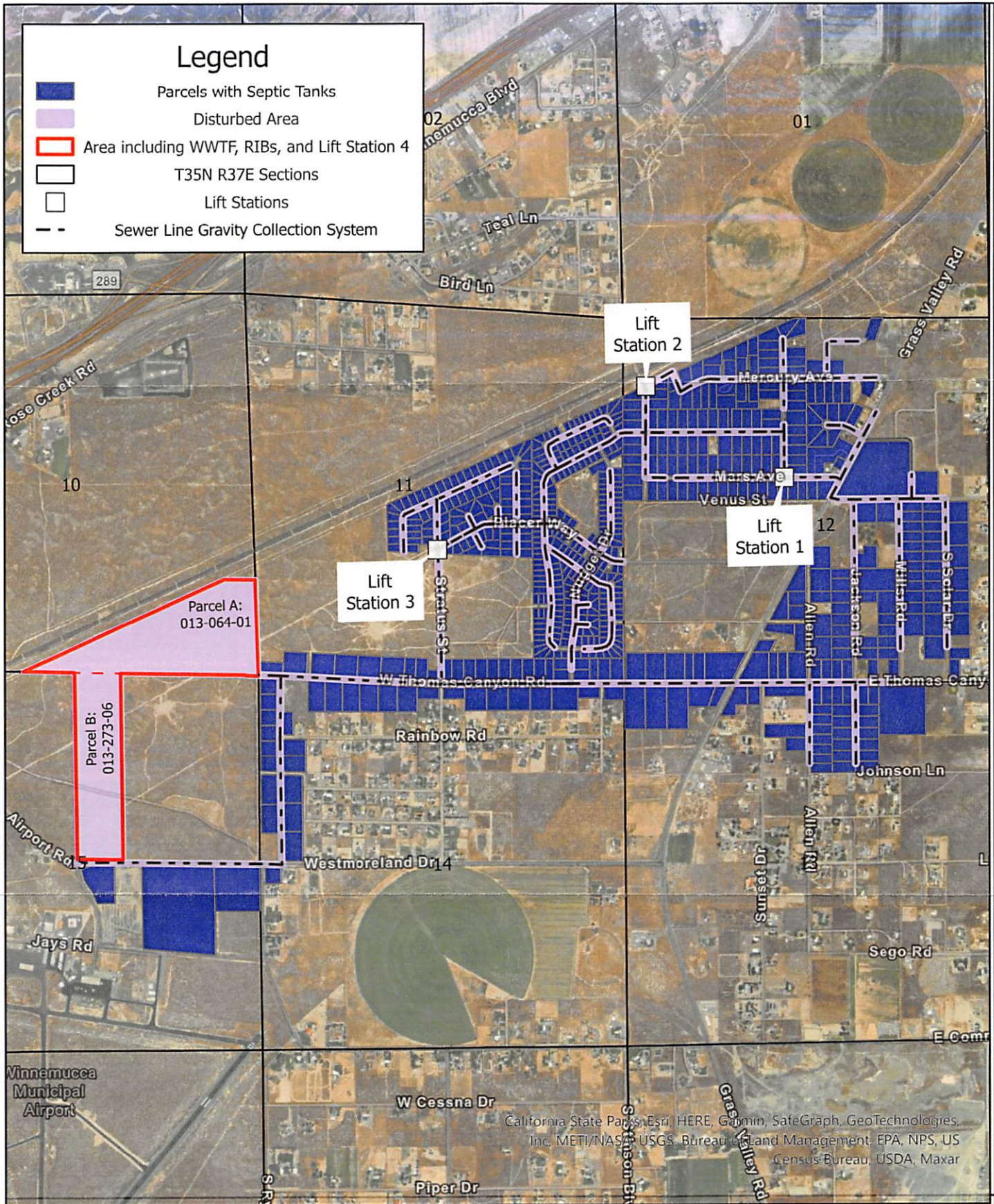
Encls: Project Location Figure

Cc: David Pulley, P.E.

Dave Mendiola, Humboldt County

Legend

- Parcels with Septic Tanks
- Disturbed Area
- Area including WWTF, RIBs, and Lift Station 4
- T35N R37E Sections
- Lift Stations
- Sewer Line Gravity Collection System



California State Parks, Esri, HERE, Garmin, SafeGraph, GeoTechnologies, Inc, METI/NAS, USGS, Bureau of Land Management, EPA, NPS, US Census Bureau, USDA, Maxar

FARR WEST
ENGINEERING

5510 Longley Lane
Reno, NV 89511
(775) 851-4788
www.farrwestengineering.com



Humboldt County Grass Valley Proposed Project Area

The data contained herein does not represent survey delineation and should not be construed as a replacement for the authoritative source. No liability is assumed by Farr West Engineering as to the sufficiency or accuracy of the data.