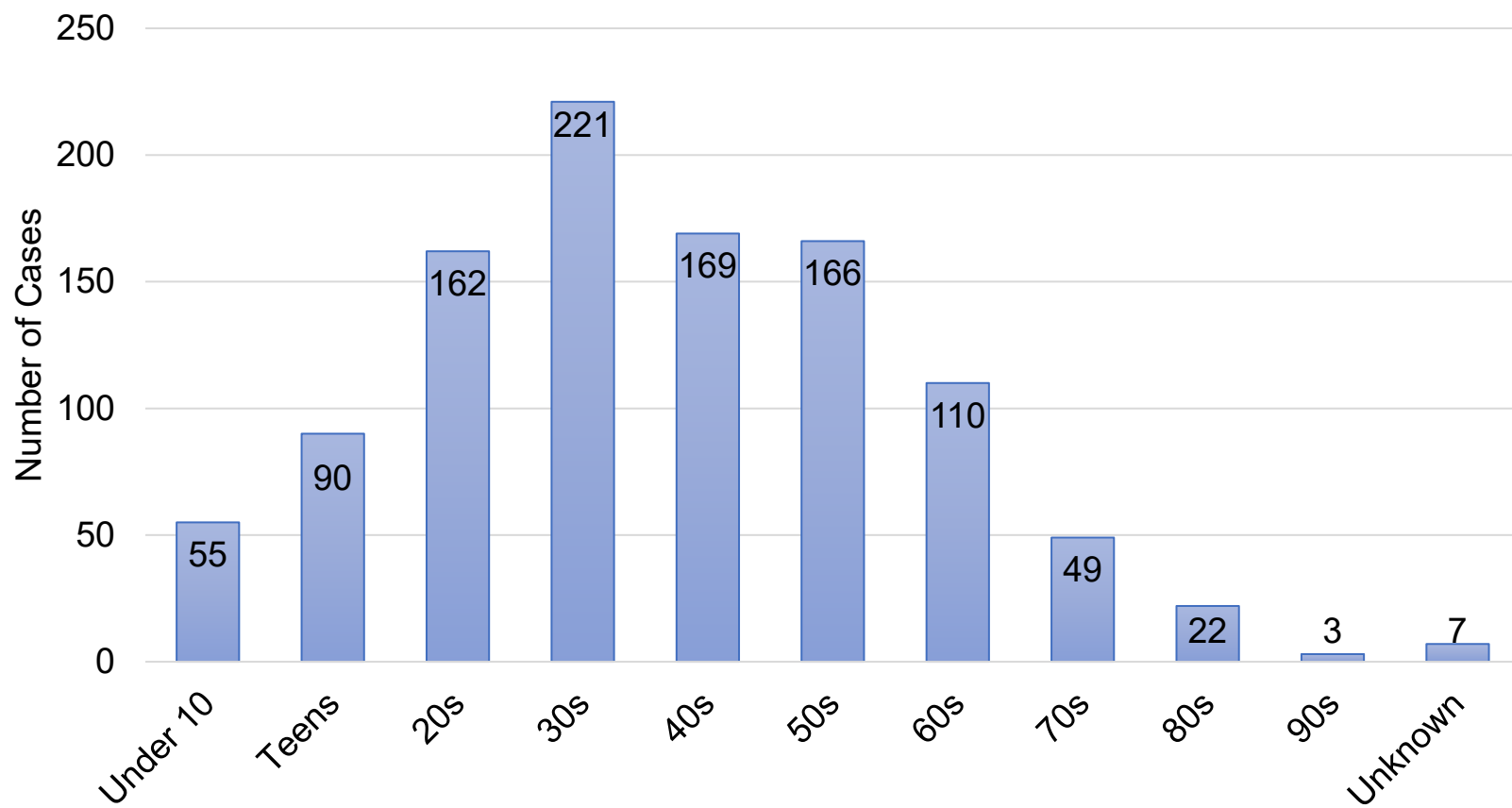
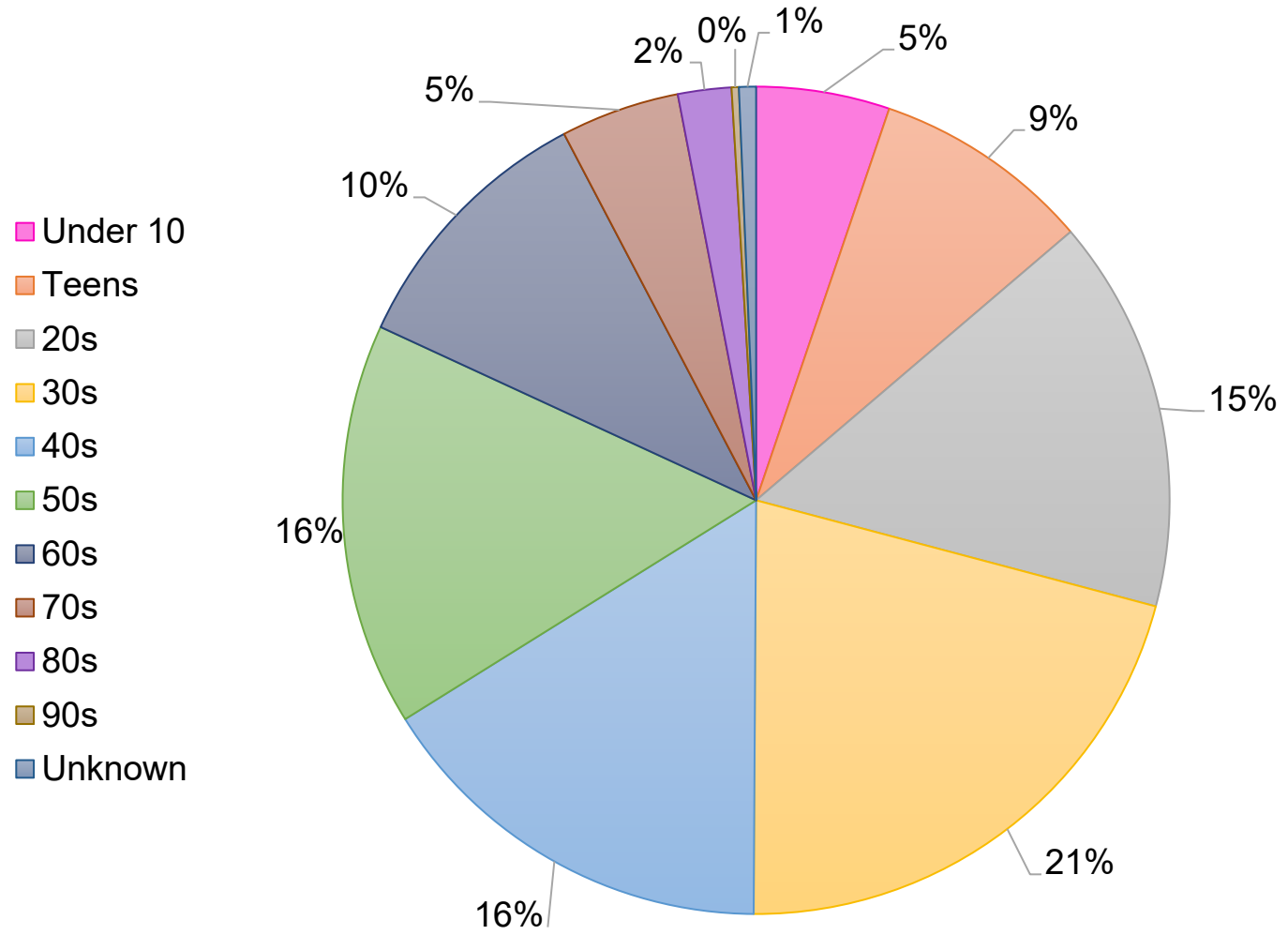


## Confirmed Cases by Age

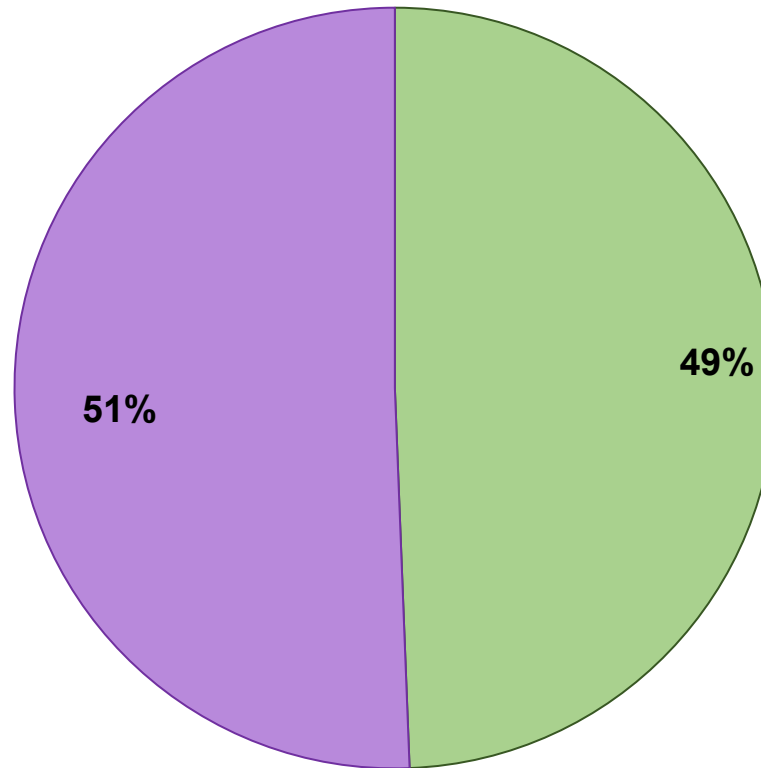


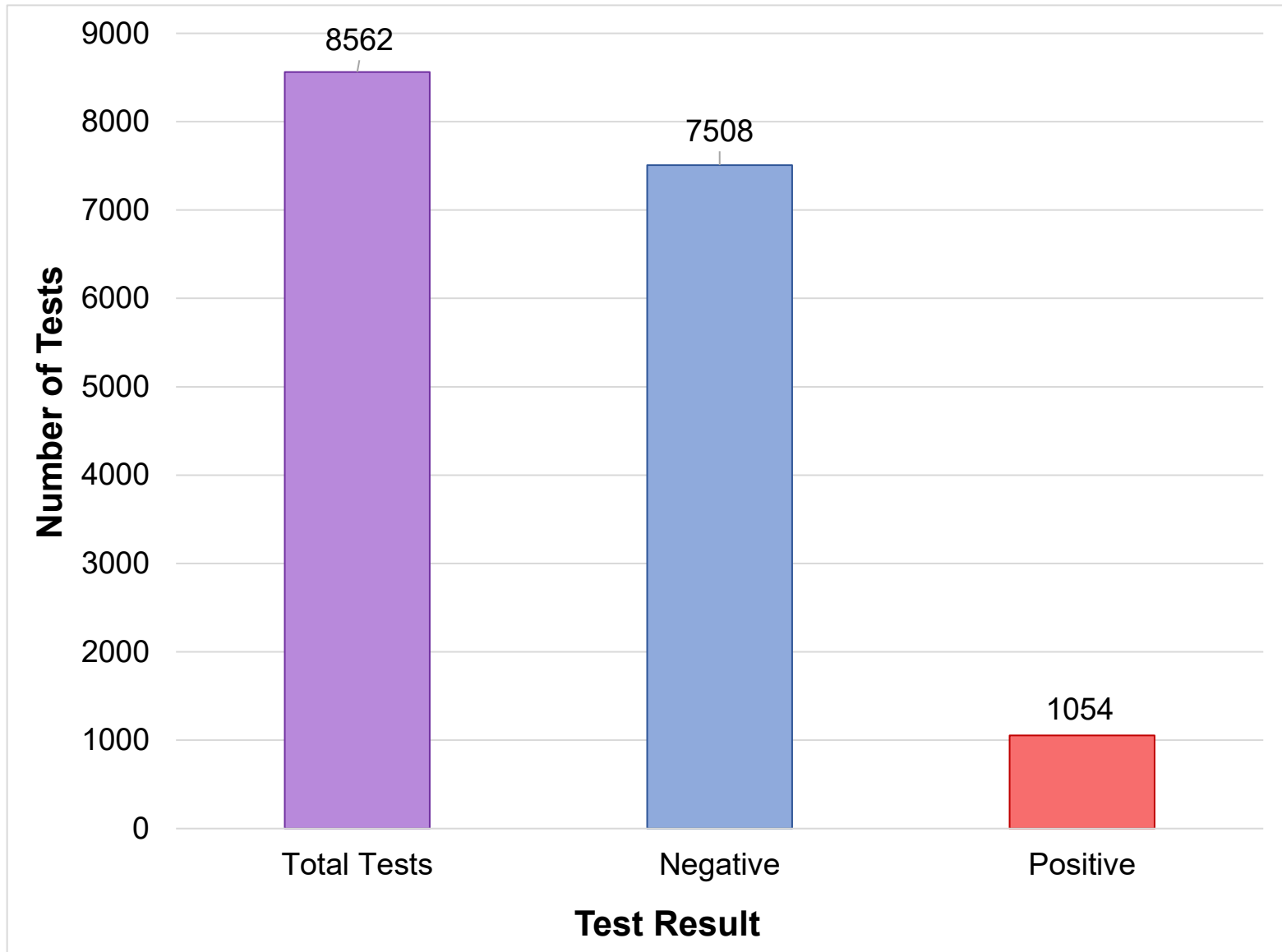
### Confirmed Cases by Age

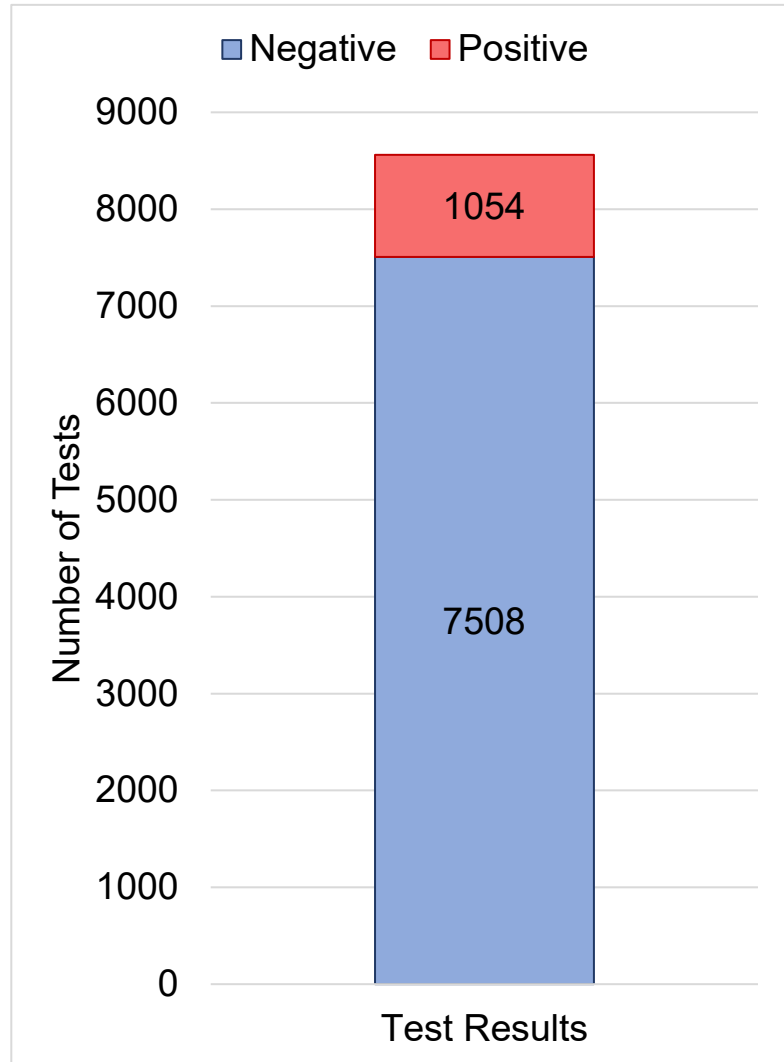
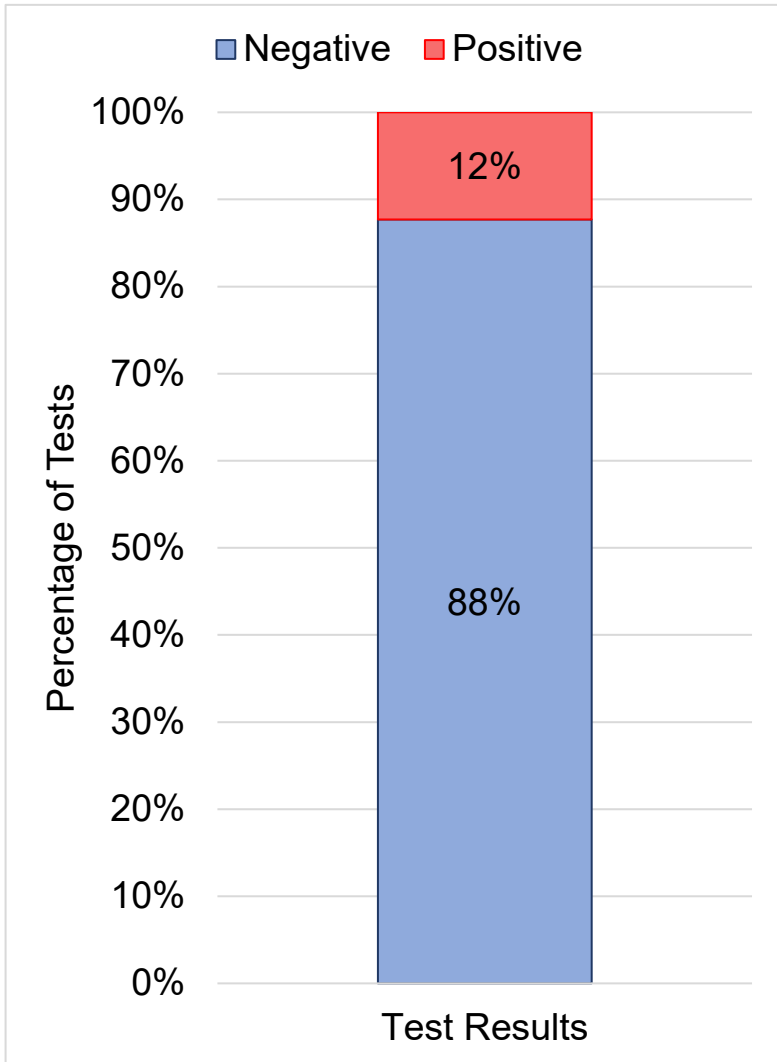


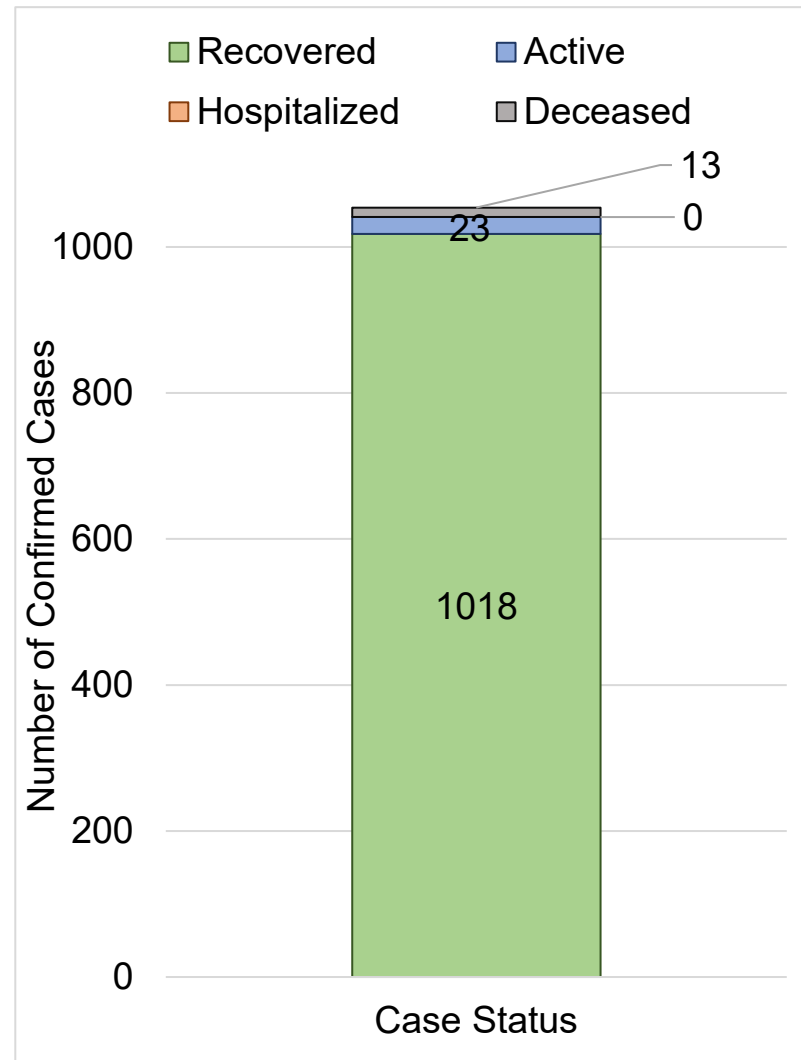
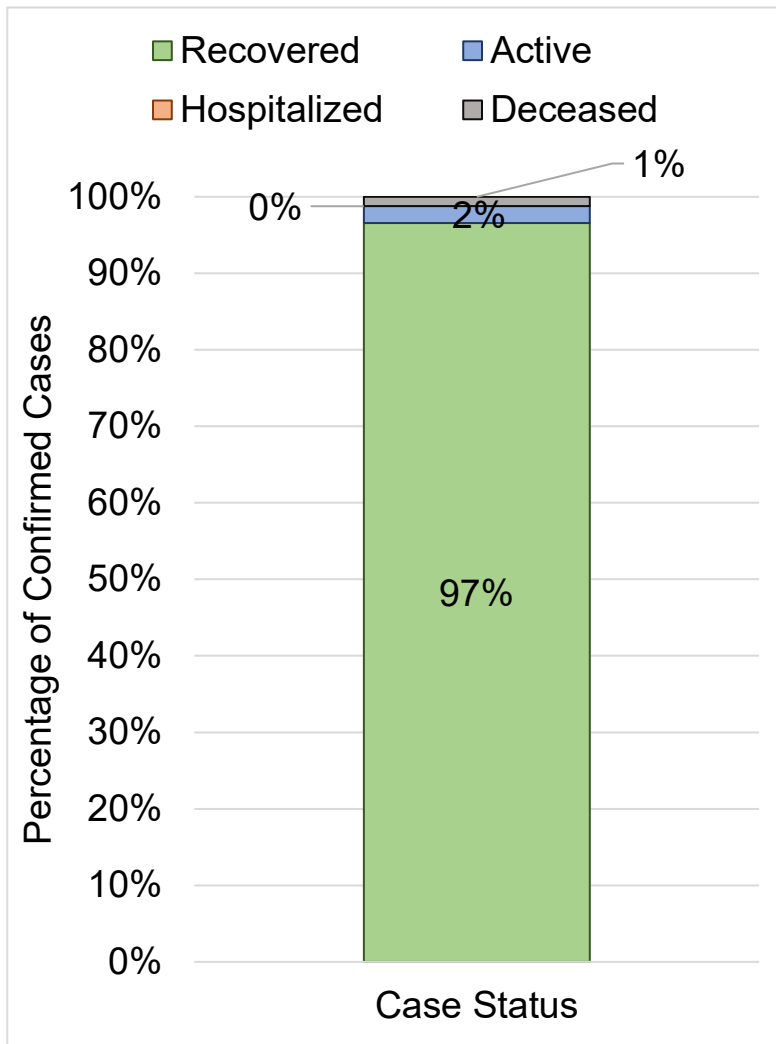
## Confirmed Cases

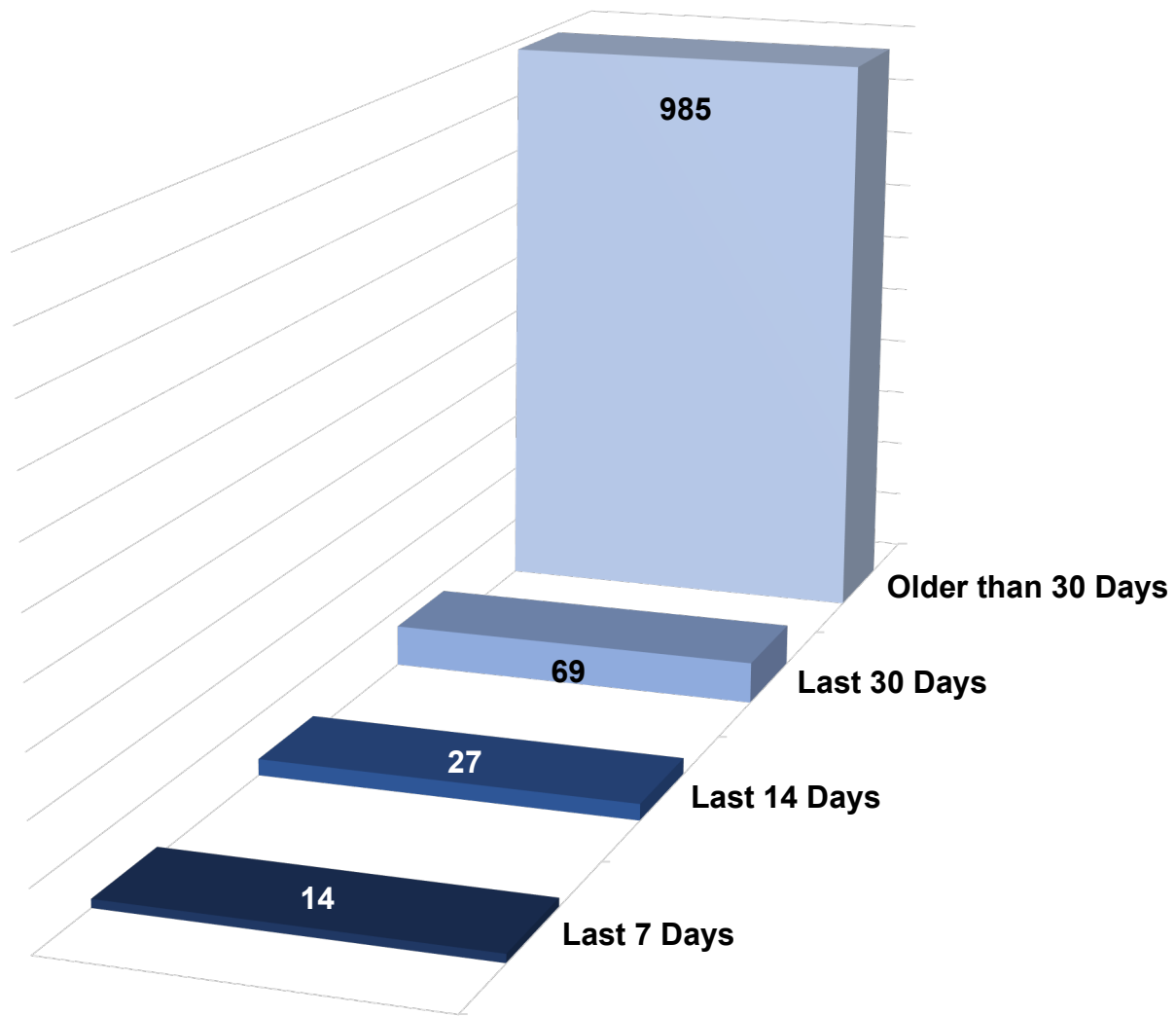
- Male
- Female





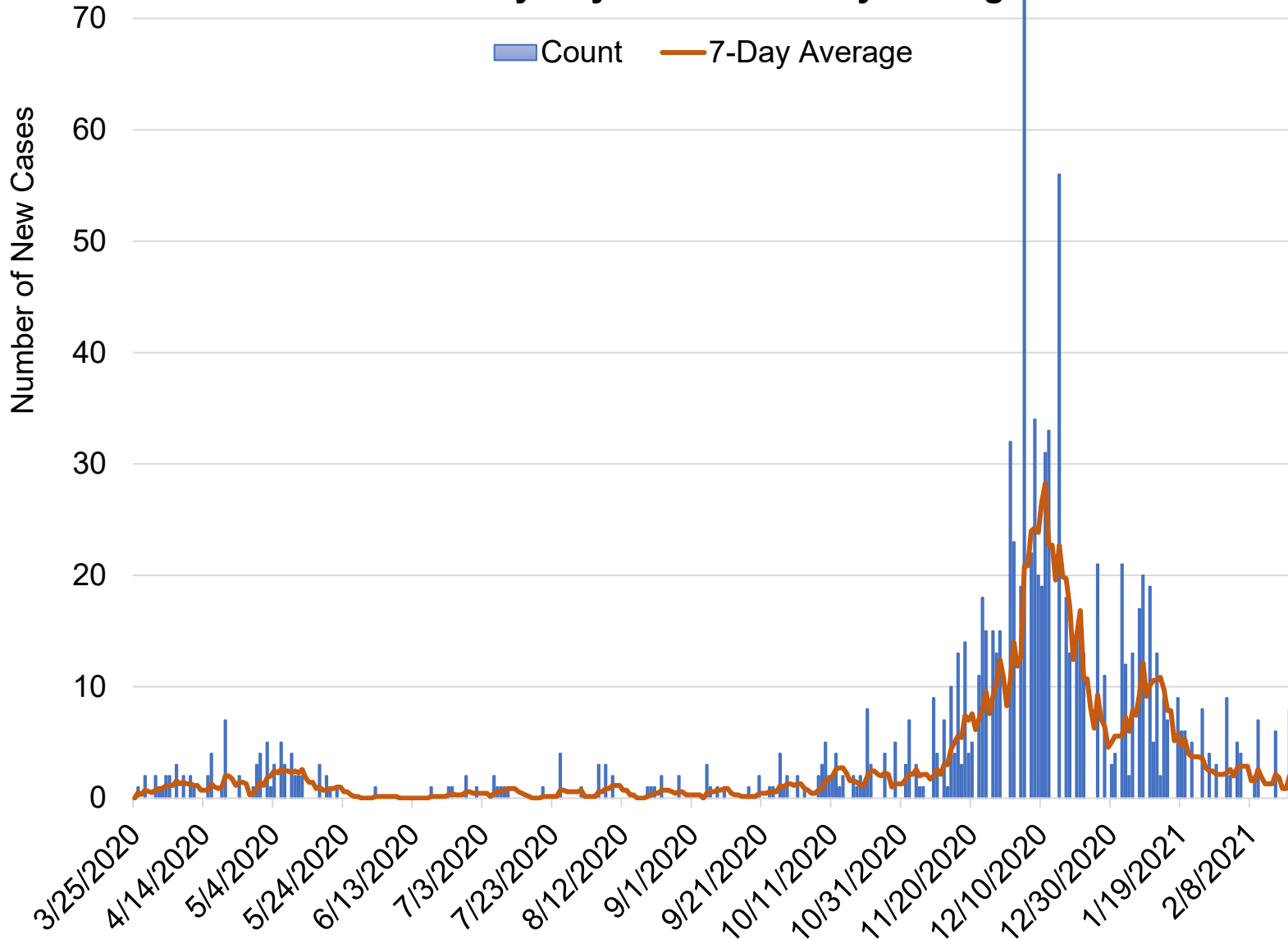






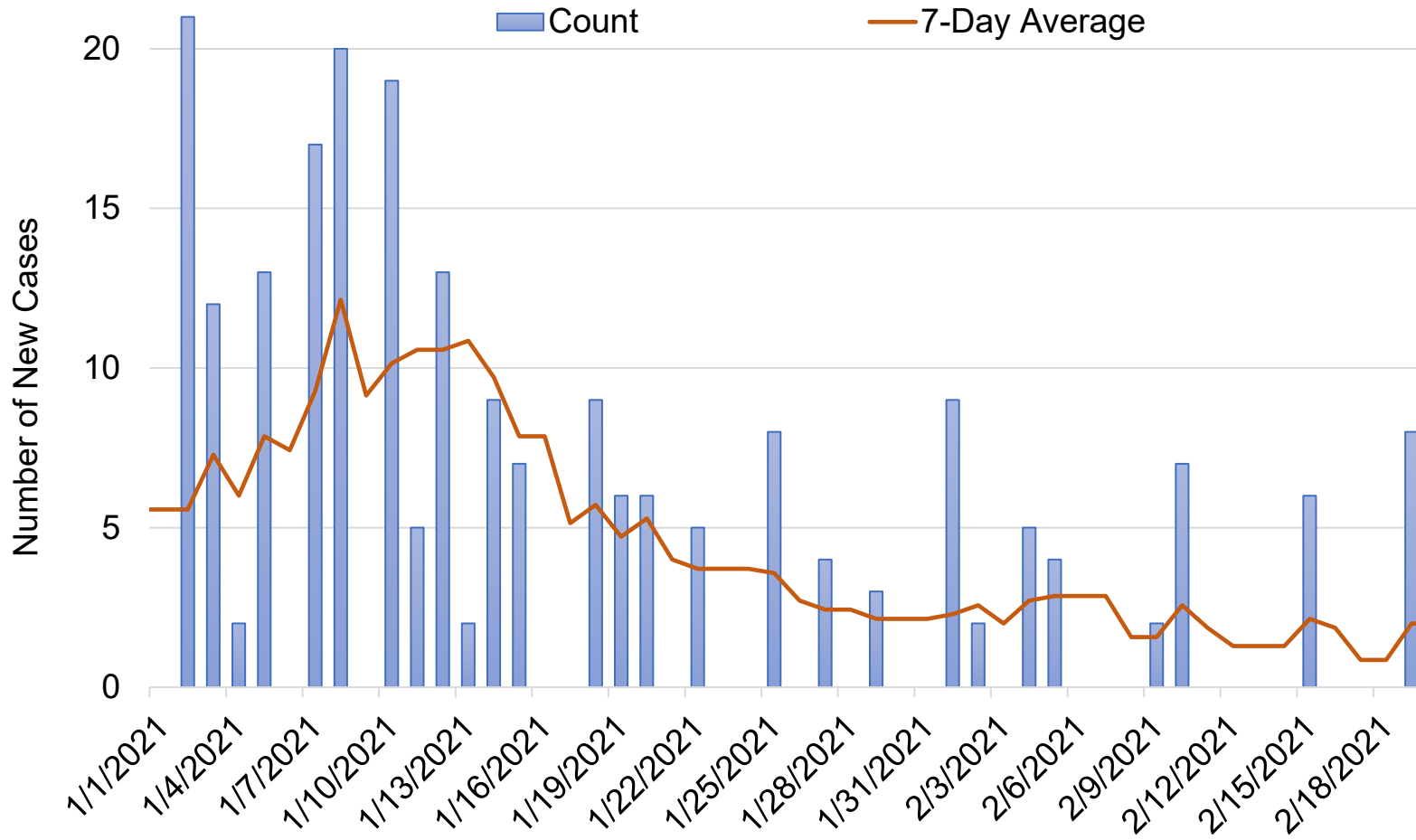
**Number of Confirmed  
Cases**

### New Cases by Day and Seven-Day Average

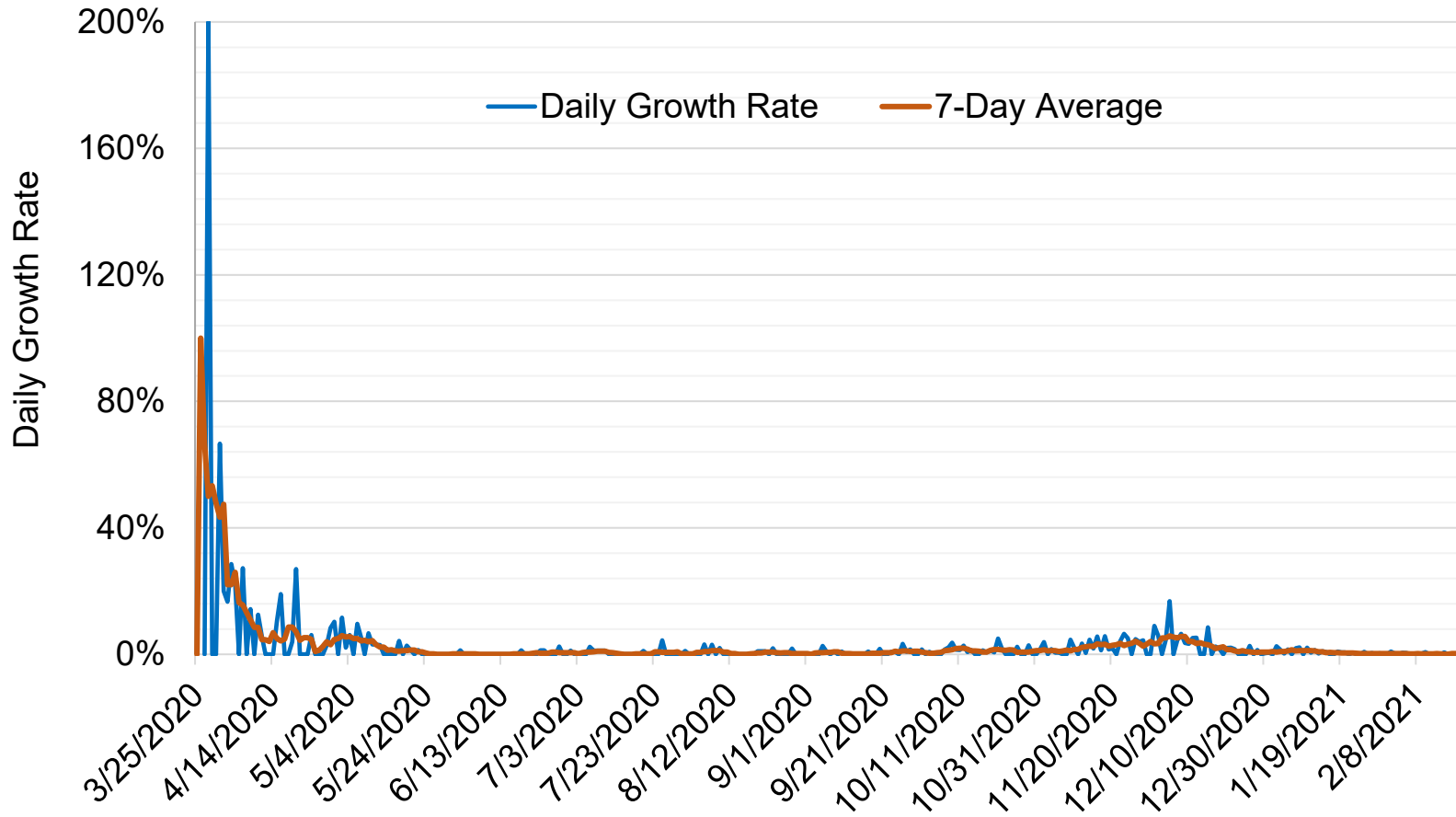




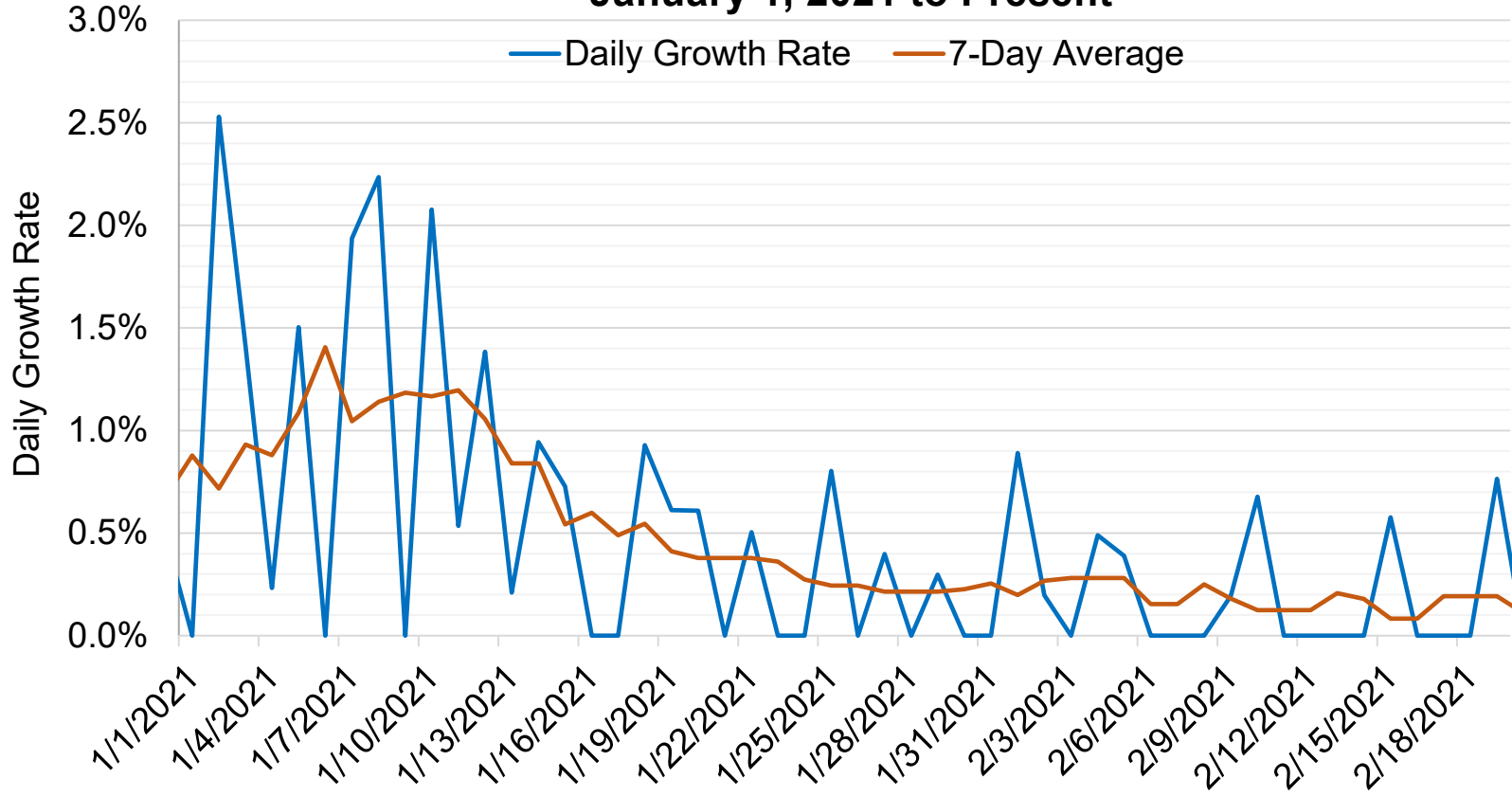
### New Cases by Day and Seven-Day Average January 1, 2021 to Present



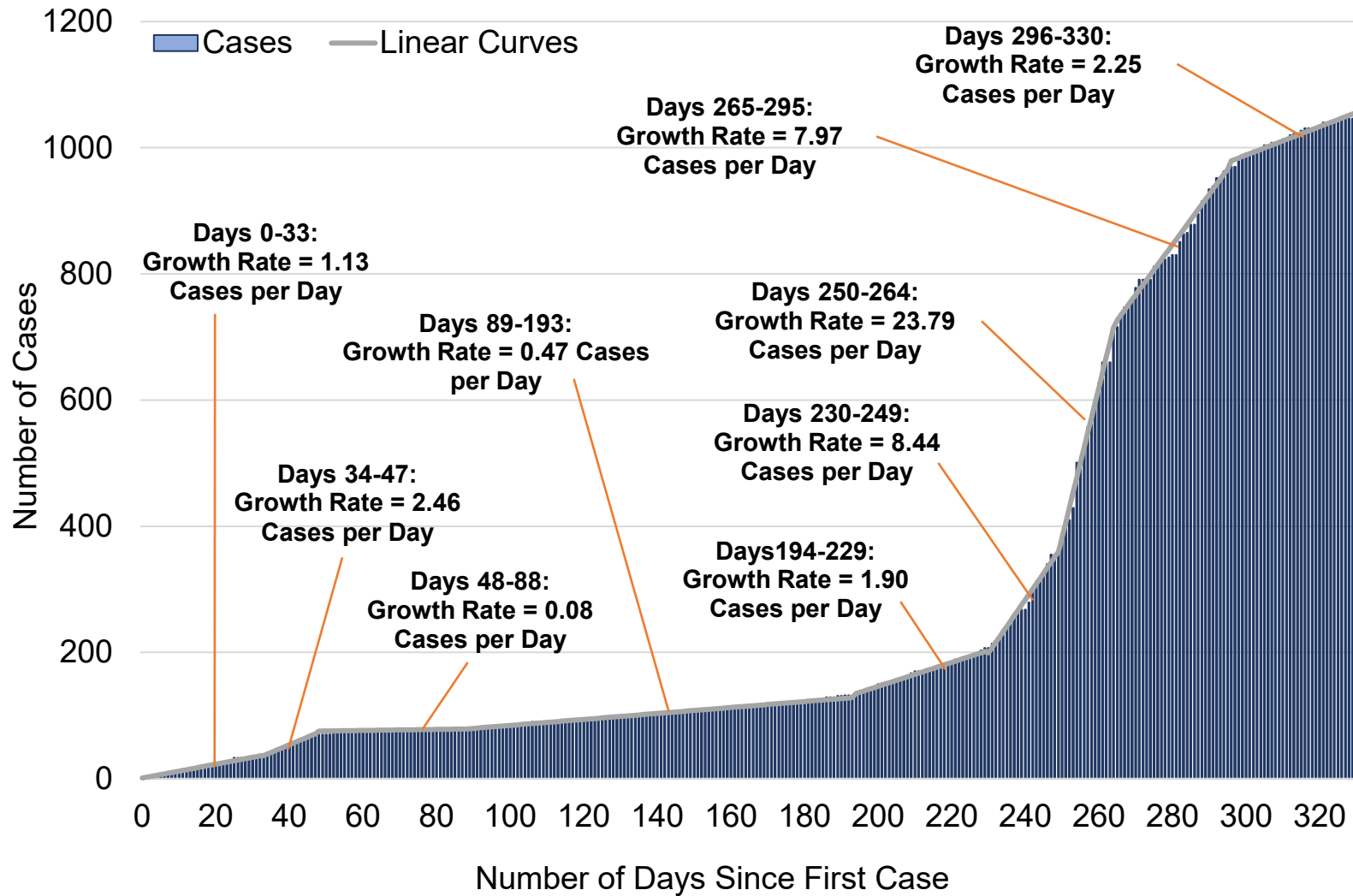
## Daily Growth Rate and 7-Day Average Growth Rate



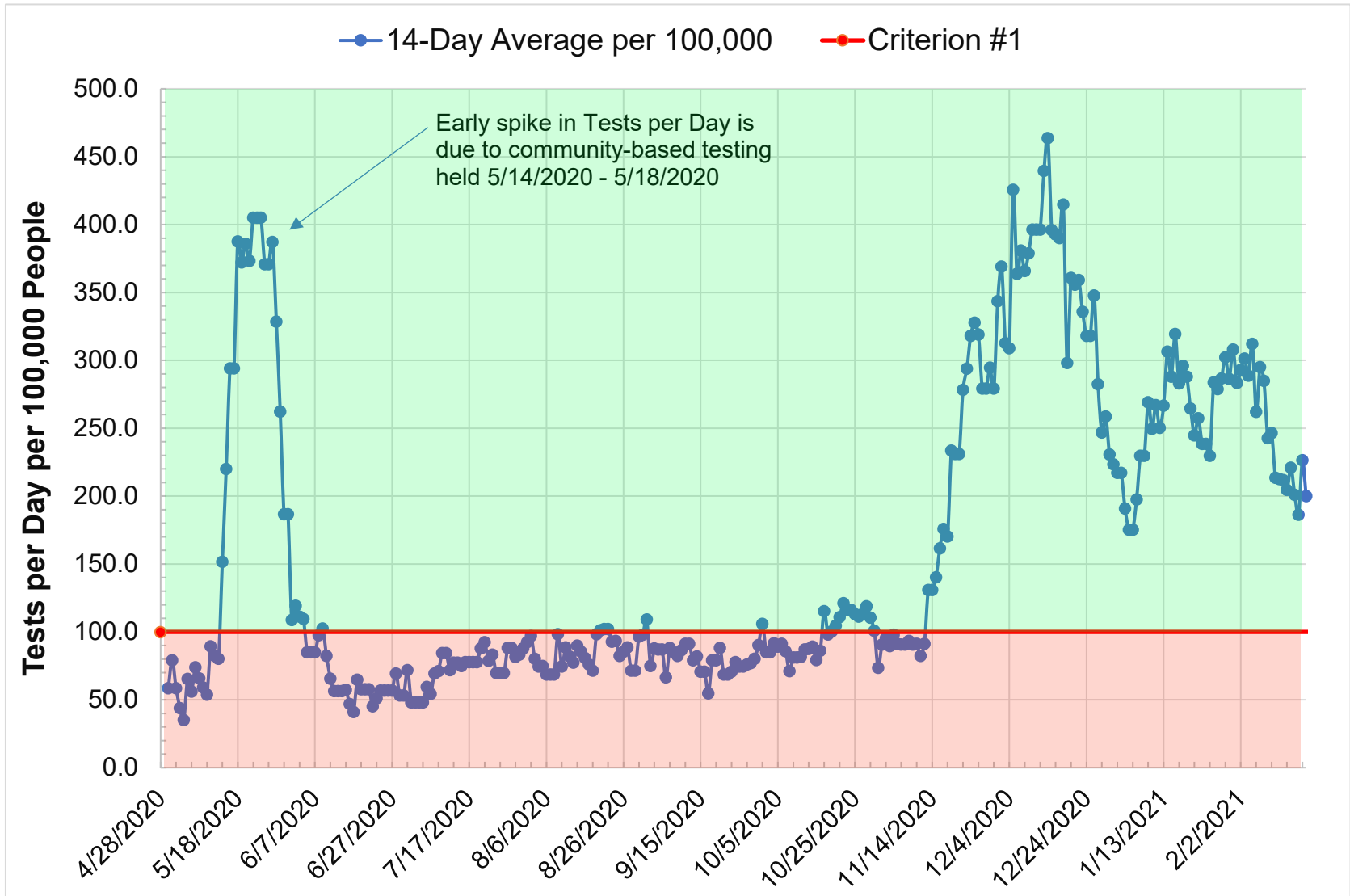
### Daily Growth Rate and 7-Day Average Growth Rate January 1, 2021 to Present



# Cumulative Cases by Day

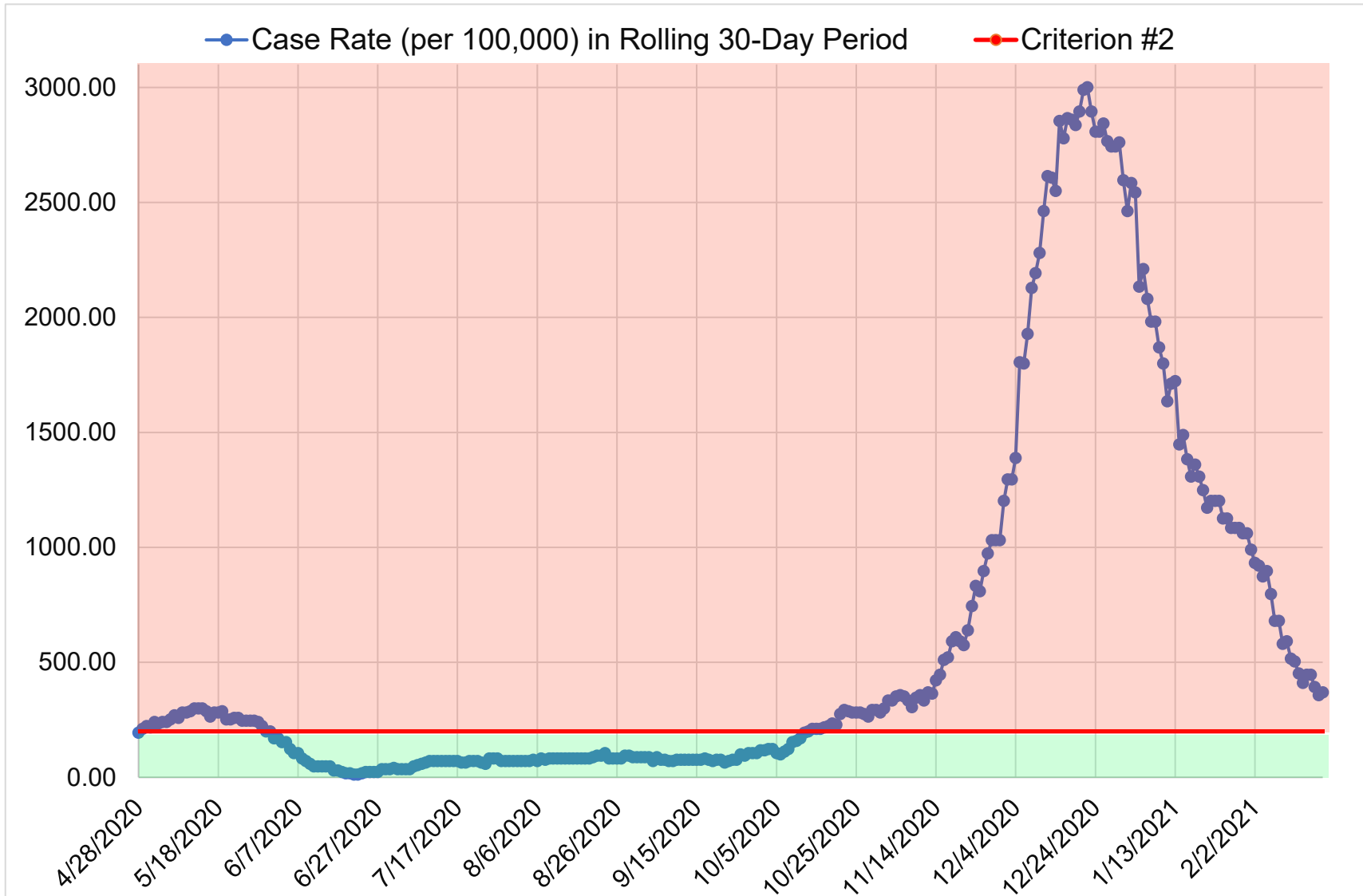


**Fail If: Average number of tests per day per 100,000 people (14-Day Average with 7-Day Lag) < 100**



**PASS**

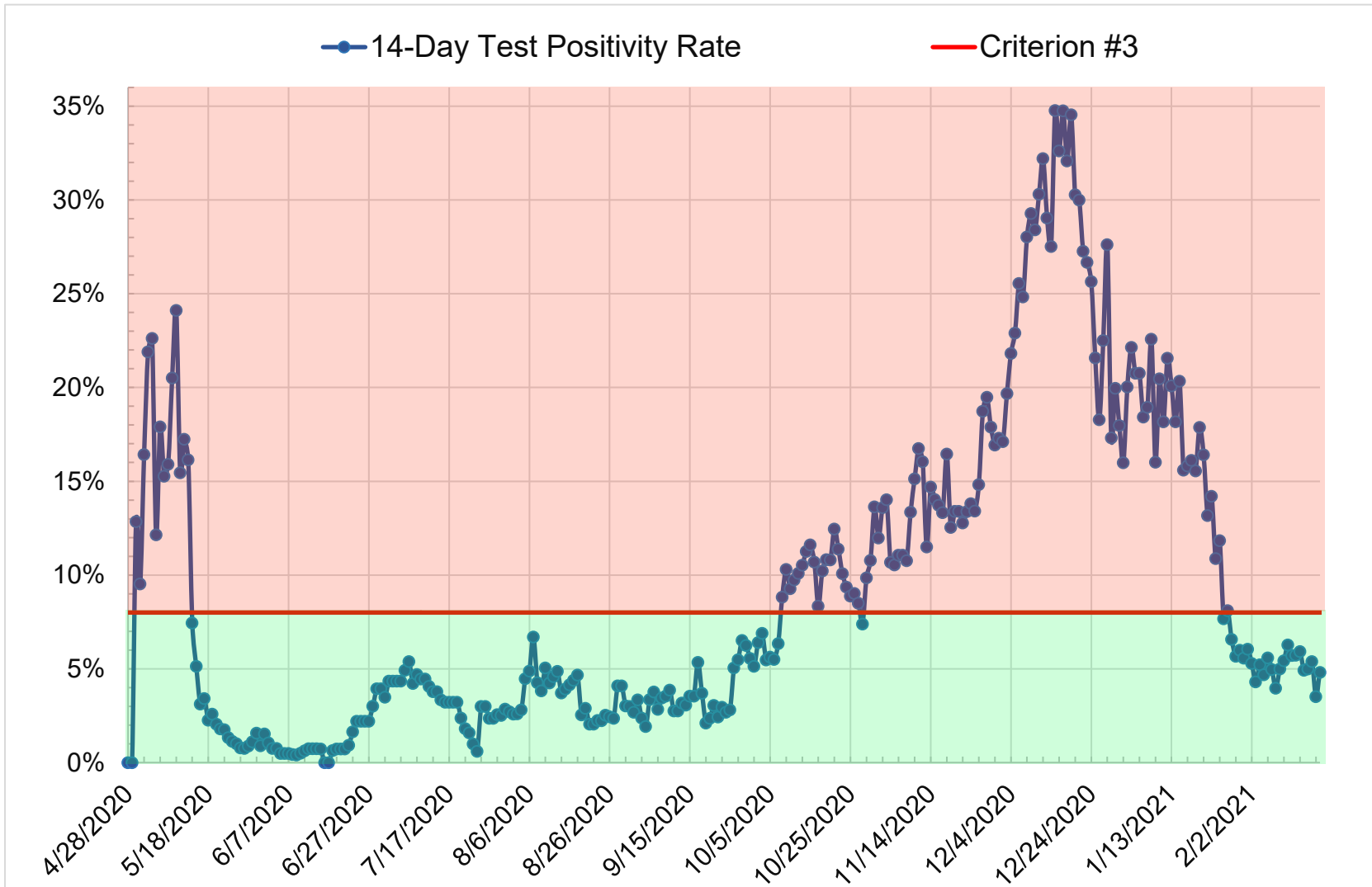
### Fail If: Case Rate per 100,000 (Total in 30-day period) > 200



FAIL

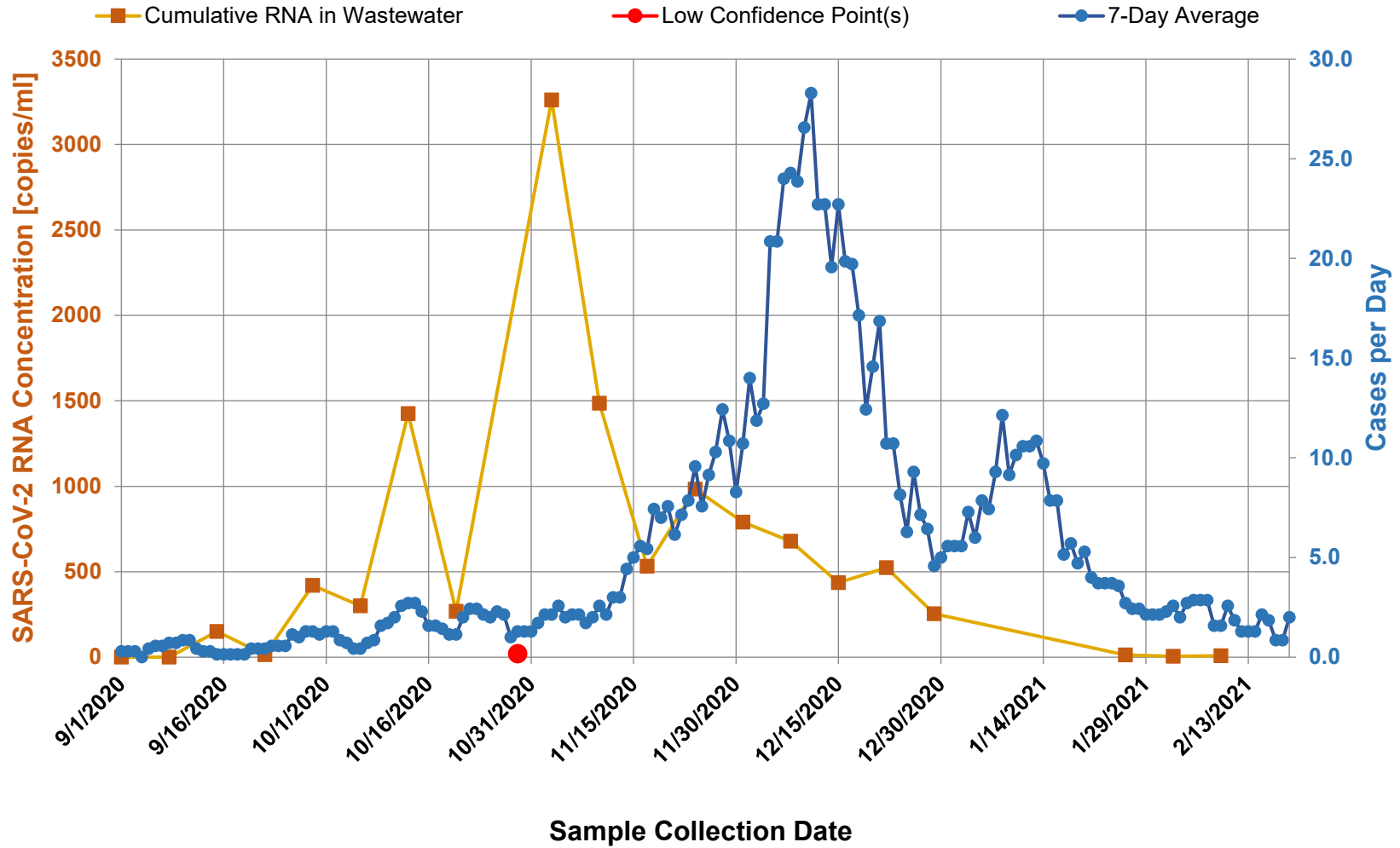
**FAIL**

**Fail If: Case Rate per 100,000 (Criterion #2) > 50 AND Testing Positivity > 8.0%**



**PASS**

# Wastewater Testing





# Wastewater Sample Results

- Treatment Plant
- East National
- West National / Highway 95
- Warmouth/Railroad Sub/Skyland Sub
- Melarkey/Harmony/Bridge/Mizpah
- Lowry High School Area
- Cumulative RNA in Wastewater

