

HUMBOLDT COUNTY

PT. NE1/4 SEC. 21 T.36N. R.38E.

Winnemucca

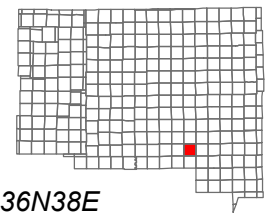
NOTE: This plat is for assessment purposes only and does not represent a survey of the lands on this plat.



Map Prepared by:
HUMBOLDT COUNTY ASSESSOR'S OFFICE
WINNEMUCCA, NEVADA 89445

16-65

1"=200'
M.D.B. & M.

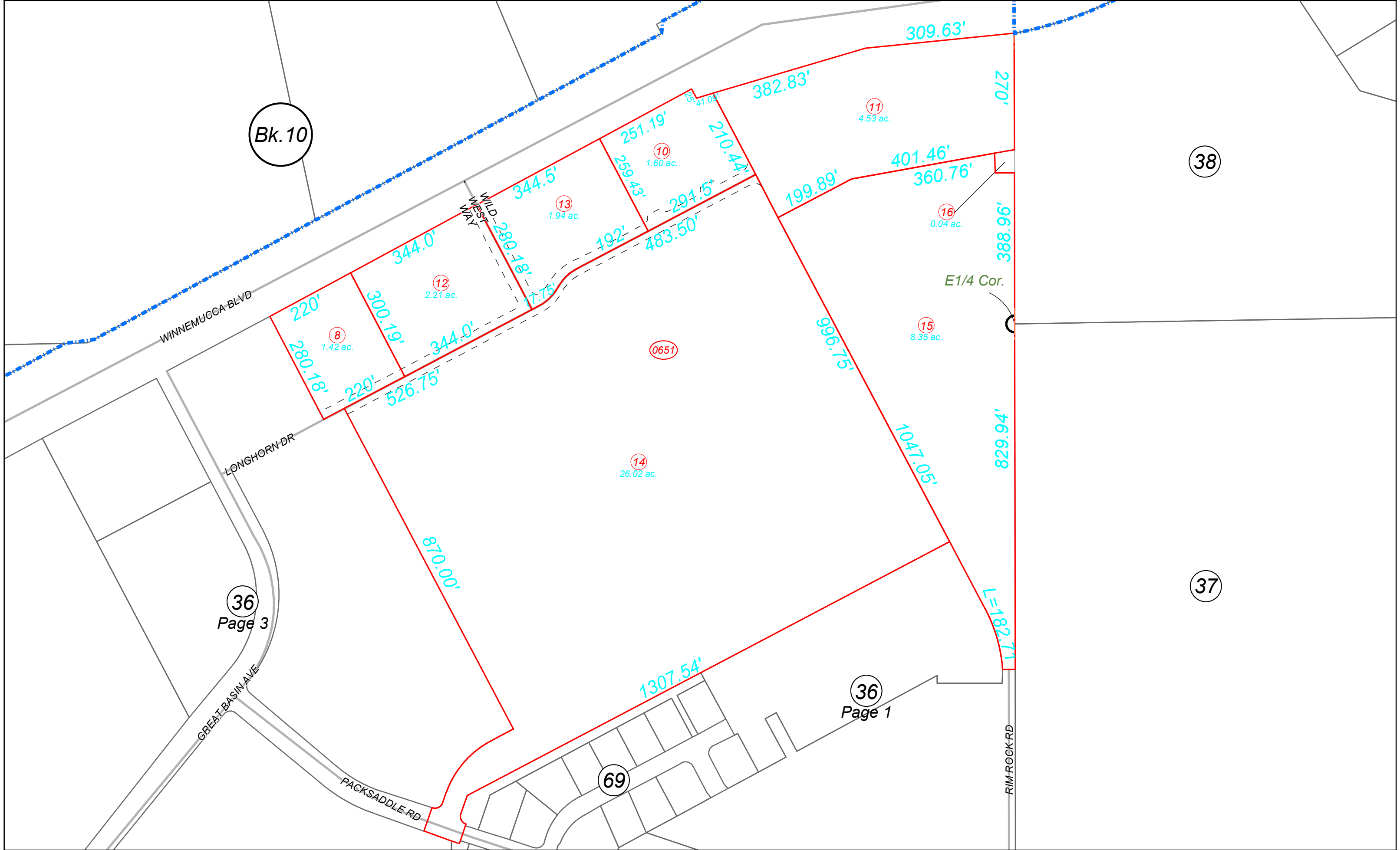


06	05	04	03	02	01
07	08	09	10	11	12
18	17	16	15	14	13
19	20	21	22	23	24
30	29	28	27	26	25
31	32	33	34	35	36



36N38E

Bk. 10



36
Page 3

36
Page 1

69

38

37

RIM ROCK RD

WINNEMUCCA BLVD

LONGHORN DR

GREAT BASIN AVE

PACKSADDLE RD

WILD WEST WAY

E1/4 Cor.

L=182.71'

1307.54'

870.00'

280.18'

220'

220'

300.19'

344.0'

344.0'

344.5'

192'

483.50'

251.19'

259.43'

210.44'

382.83'

309.63'

270'

401.46'

360.76'

96.88'

8.35 ac.

46.628'

1047.05'

829.94'

26.02 ac.

0651

1.94 ac.

1.60 ac.

4.53 ac.

2.21 ac.

1.42 ac.

36

36

69

38

37

RIM ROCK RD

WINNEMUCCA BLVD

LONGHORN DR

GREAT BASIN AVE

PACKSADDLE RD

WILD WEST WAY

E1/4 Cor.

L=182.71'

1307.54'

870.00'

280.18'

220'

220'

300.19'

344.0'

344.0'

344.5'

192'

483.50'

251.19'

259.43'

210.44'

382.83'

309.63'

270'

401.46'

360.76'

96.88'

8.35 ac.

46.628'

1047.05'

829.94'

26.02 ac.

0651

1.94 ac.

1.60 ac.

4.53 ac.

2.21 ac.

1.42 ac.

36

36

69

38

37

RIM ROCK RD