

HUMBOLDT COUNTY

PT. NW1/4 SEC. 29 T.36N. R.38E.

Harmony Sub., Upper Winnemucca - Winnemucca

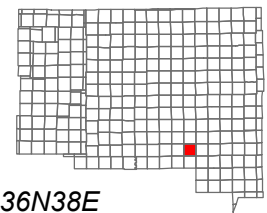
NOTE: This plat is for assessment purposes only and does not represent a survey of the lands on this plat.



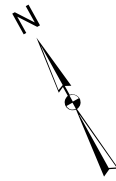
Map Prepared by:
HUMBOLDT COUNTY ASSESSOR'S OFFICE
WINNEMUCCA, NEVADA 89445

16-4

1"=100'
M.D.B. & M.



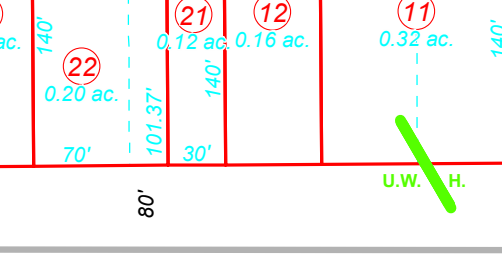
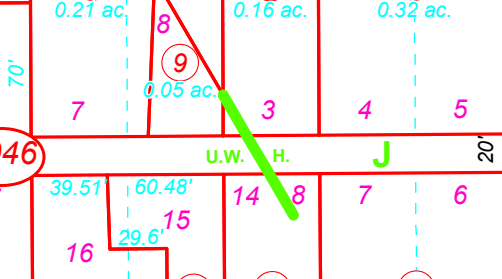
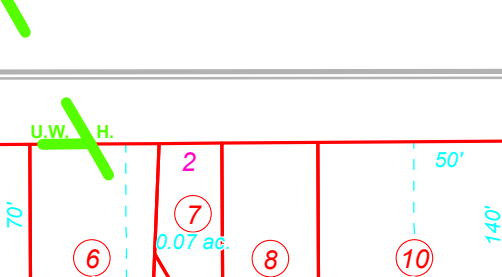
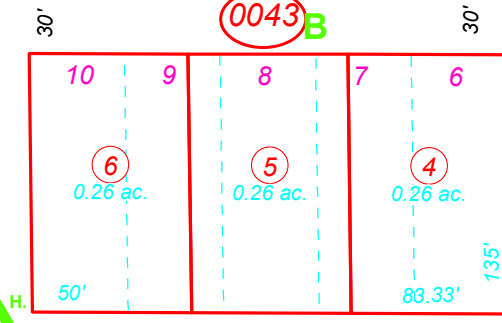
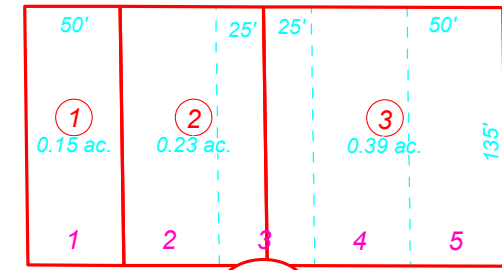
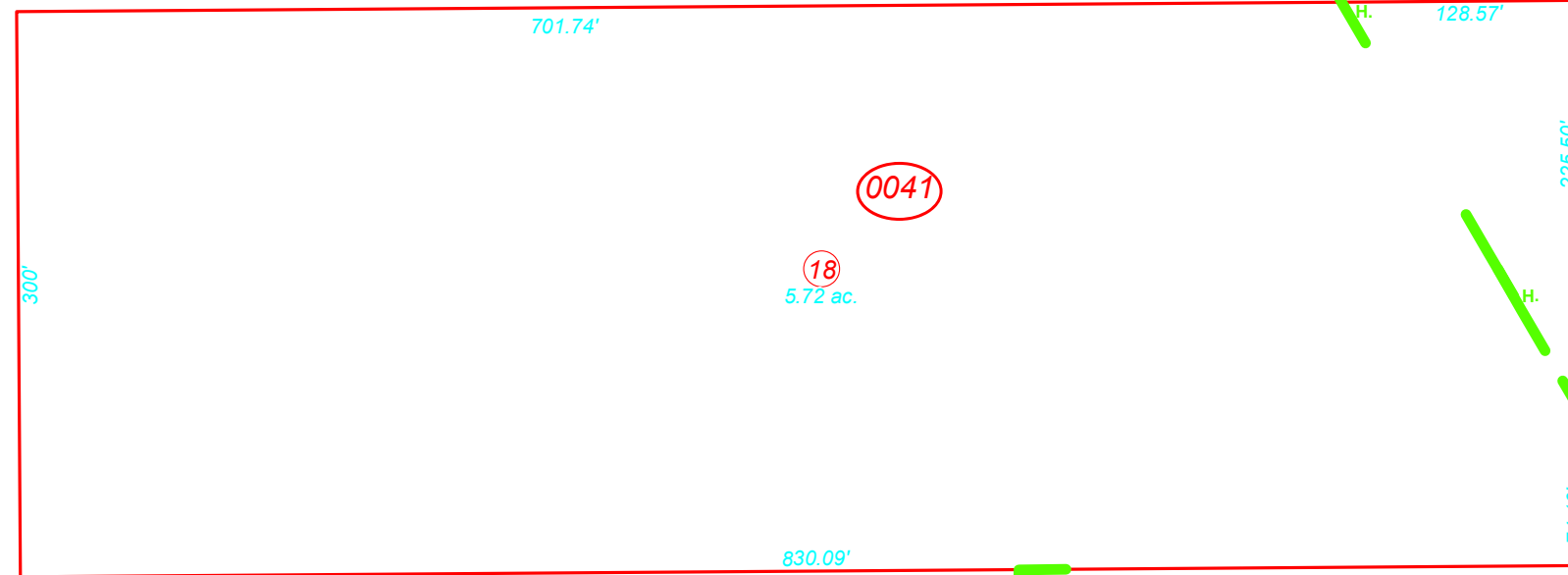
06	05	04	03	02	01
07	08	09	10	11	12
18	17	16	15	14	13
19	20	21	22	23	24
30	29	28	27	26	25
31	32	33	34	35	36



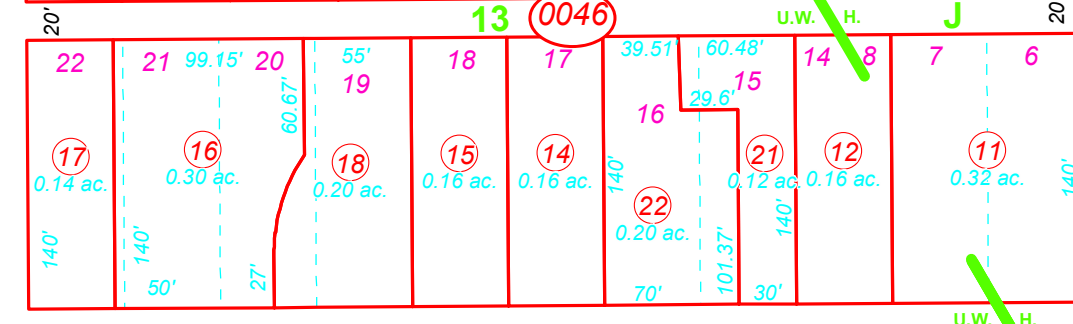
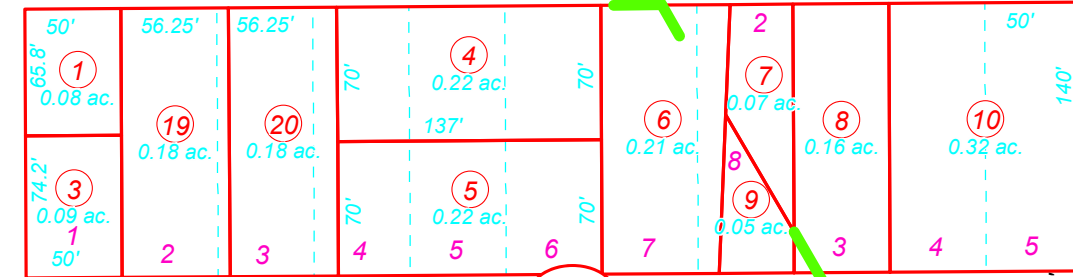
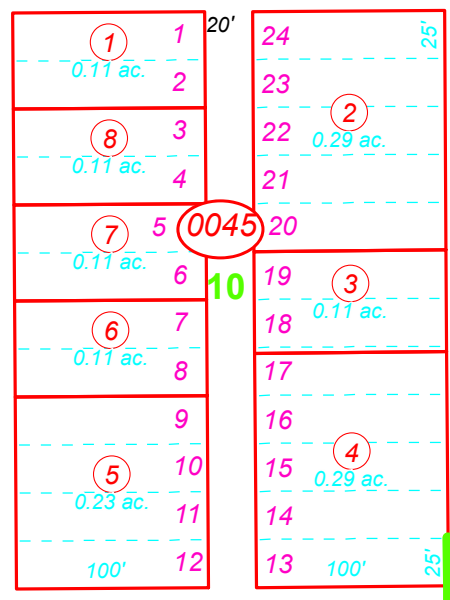
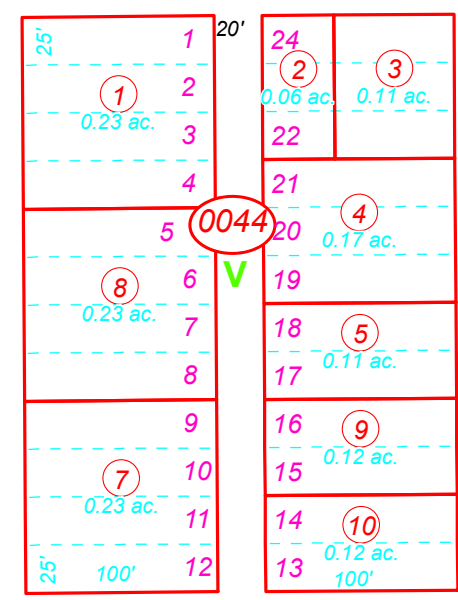
36N38E

1

MIZPAH ST



HARMONY RD



BRIDGE ST

HASKELL ST

6

5

KENDALL ST

3

SOUTH ST

2

8

U.W.

KENDALL ST

U.W.

U.W. H.

U.W.

U.W. H.