

HUMBOLDT COUNTY

S1/2 NW1/4 SEC. 12 T.35N. R.37E.

Star City Mobile Estates - Phase 1 & 2

NOTE: This plat is for assessment purposes only and does not represent a survey of the lands on this plat.



Map Prepared by: HUMBOLDT COUNTY ASSESSOR'S OFFICE WINNEMUCCA, NEVADA 89445

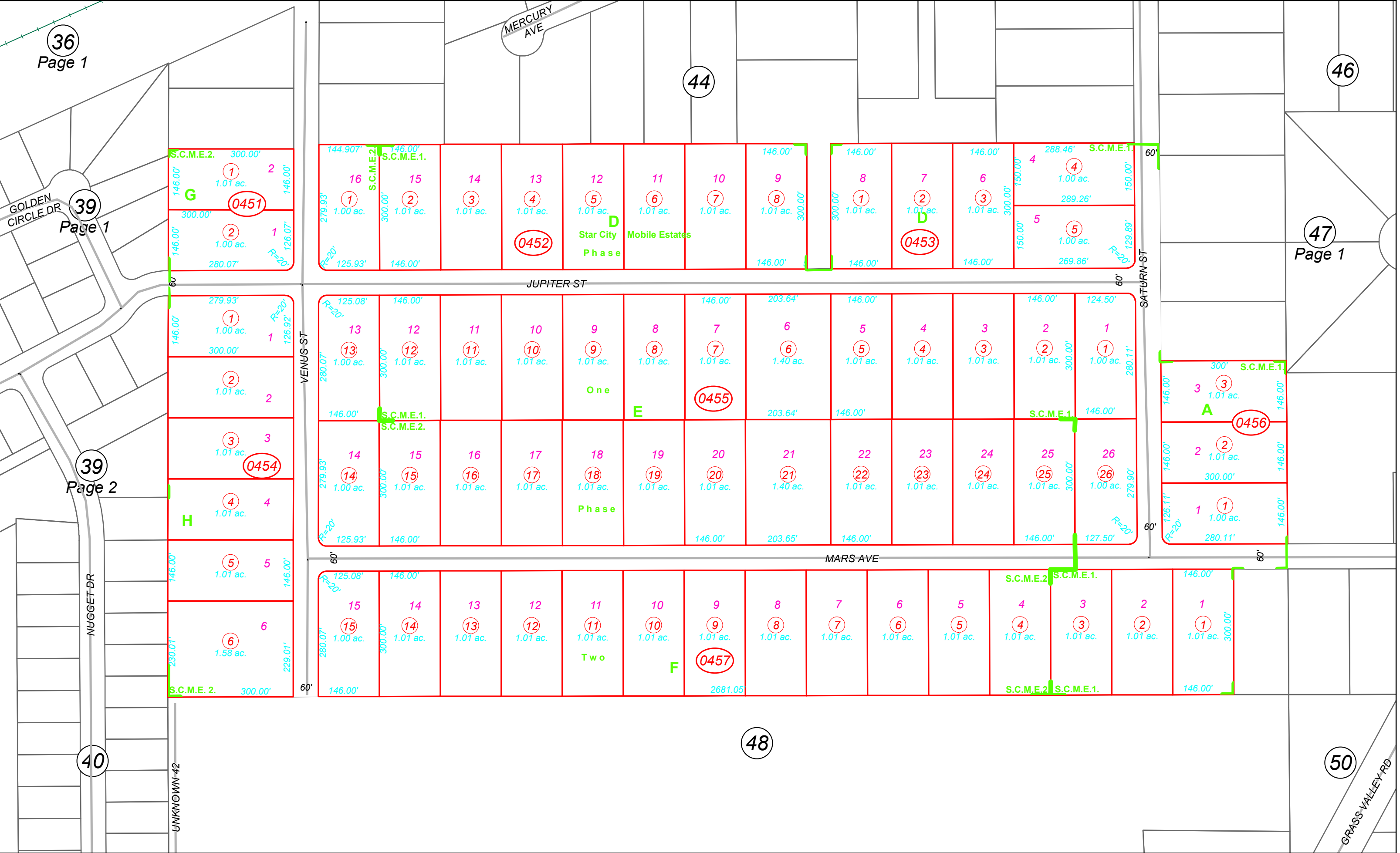
13-45

1"=200' M.D.B. & M.

06	05	04	03	02	01
07	08	09	10	11	12
18	17	16	15	14	13
19	20	21	22	23	24
30	29	28	27	26	25
31	32	33	34	35	36



35N37E



36 Page 1

39 Page 1

39 Page 2

40

44

46

47 Page 1

48

50