

06	05	04	03	02	01
07	08	09	10	11	12
18	17	16	15	14	13
19	20	21	22	23	24
30	29	28	27	26	25
31	32	33	34	35	36



# HUMBOLDT COUNTY

NW1/4, W1/2 NE1/4 SEC. 17 T.39N. R.39E.

NOTE: This plat is for assessment purposes only and does not represent a survey of the lands on this plat.



Map Prepared by:  
HUMBOLDT COUNTY ASSESSOR'S OFFICE  
WINNEMUCCA, NEVADA 89445

## 6-28

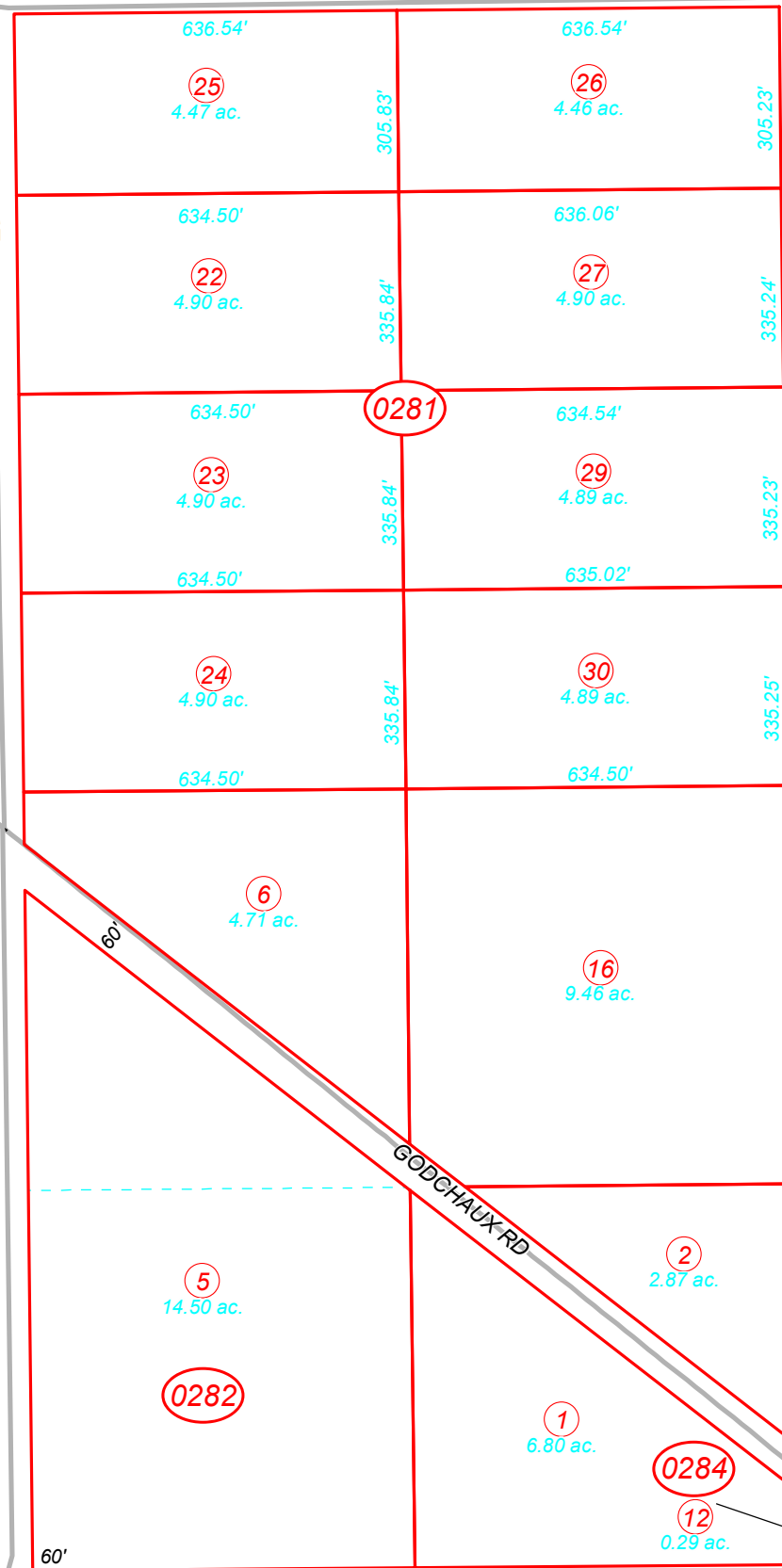
1"=300'  
M.D.B. & M.

39N39E

24

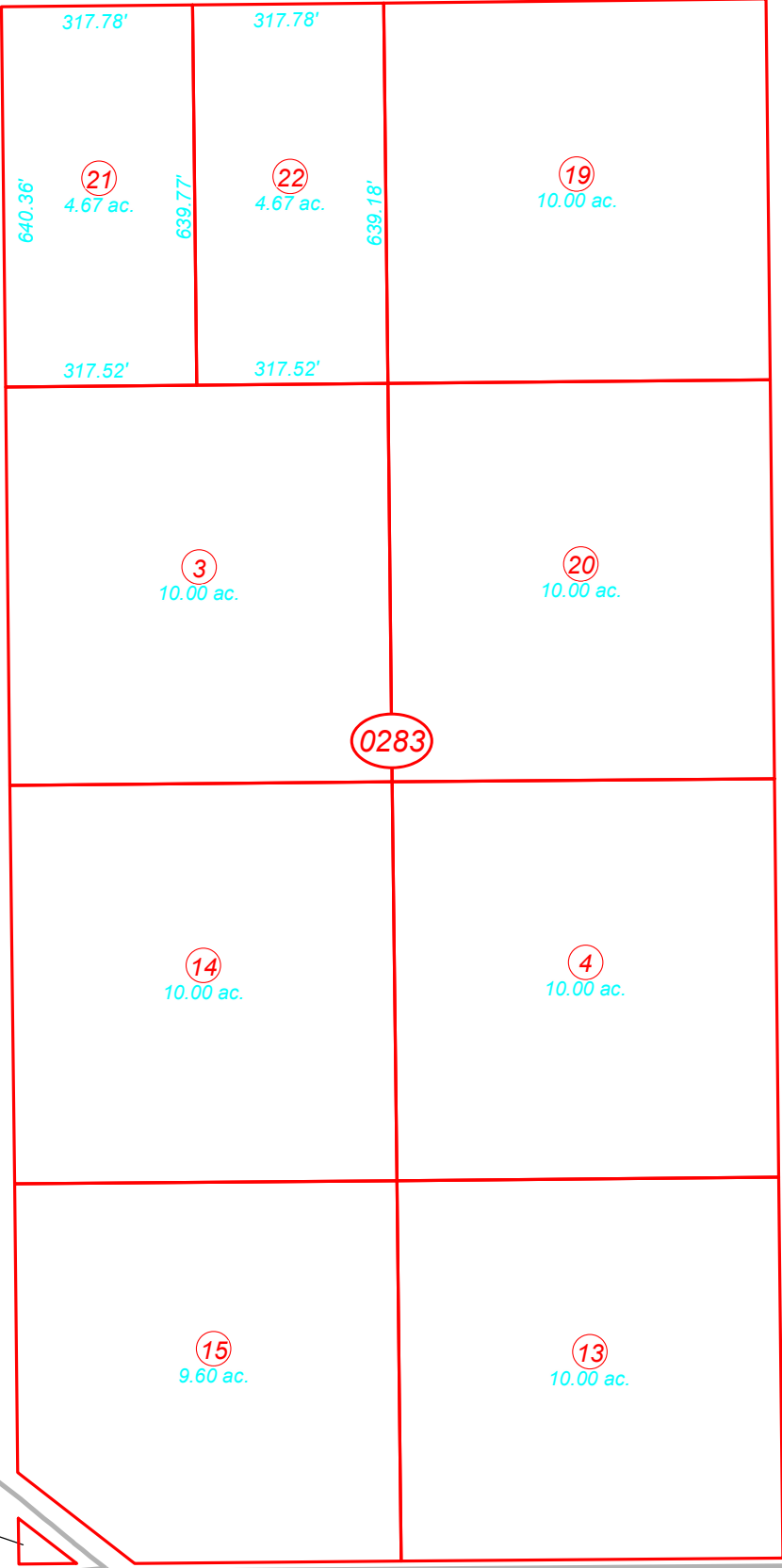
MAUSER DR

COLT DR



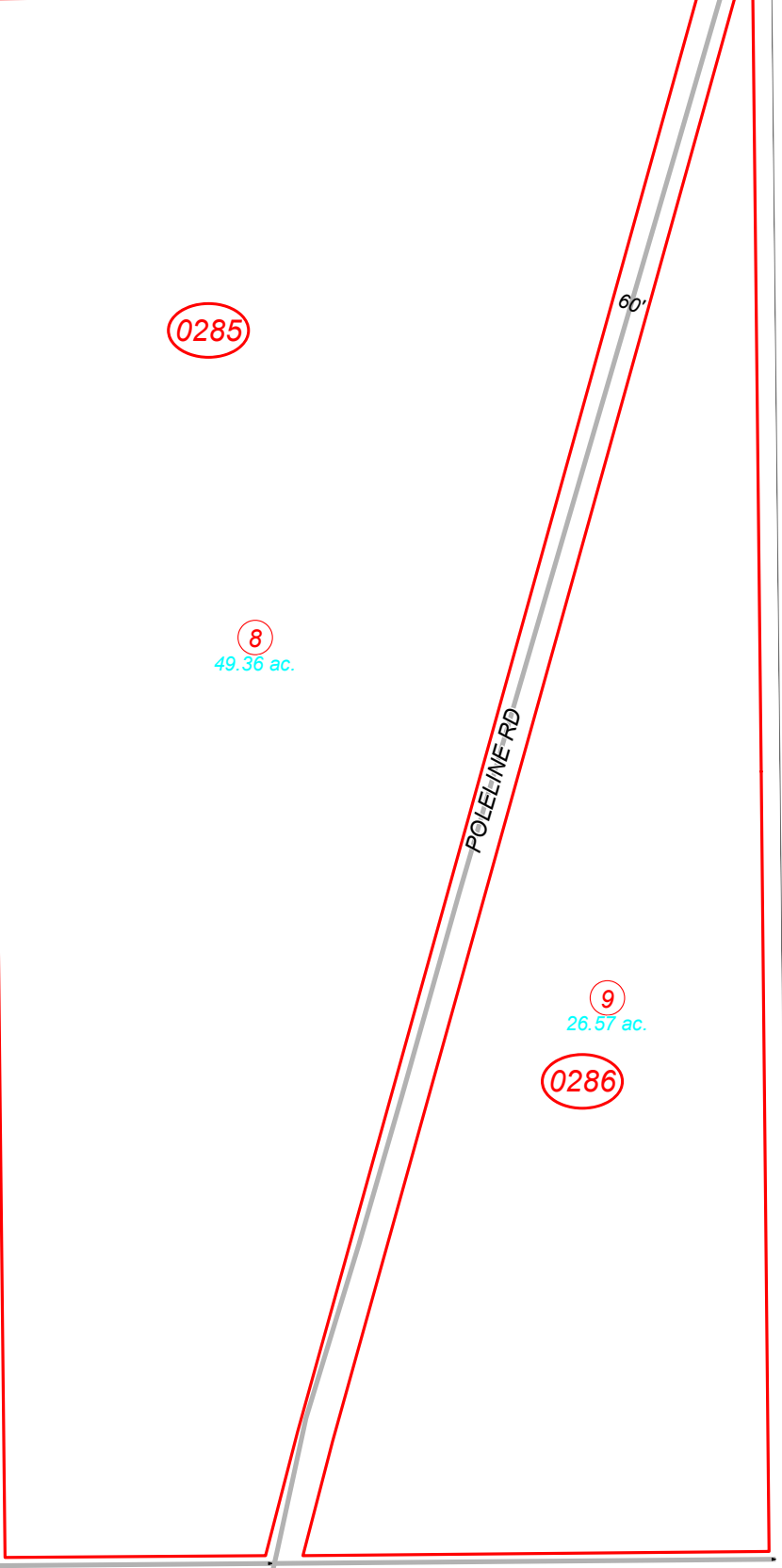
0281

ANTHONY DR



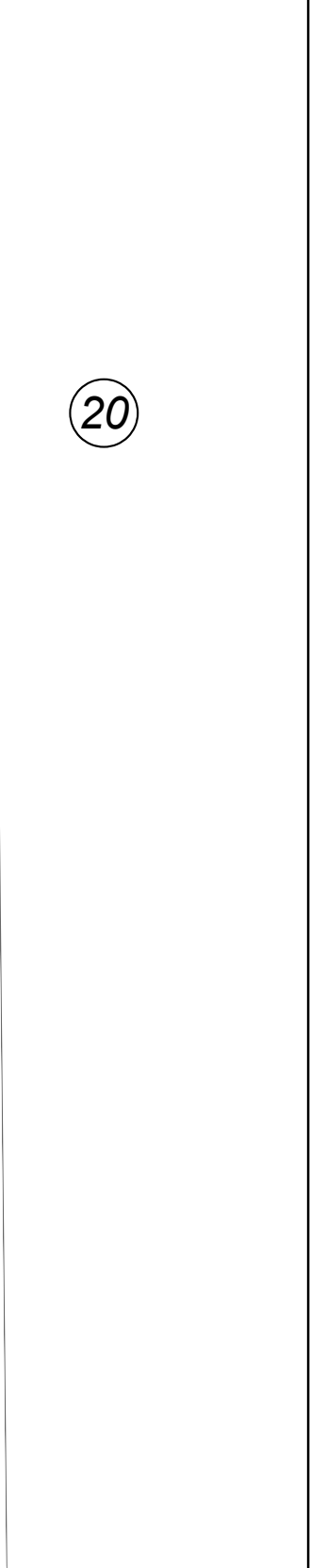
0283

ZION DR



0285

POLELINE RD



0286

20

26

Page 1

CHEYENNE DR

25