

HUMBOLDT COUNTY

T.35N. R.34E.

NOTE: This plat is for assessment purposes only and does not represent a survey of the lands on this plat.



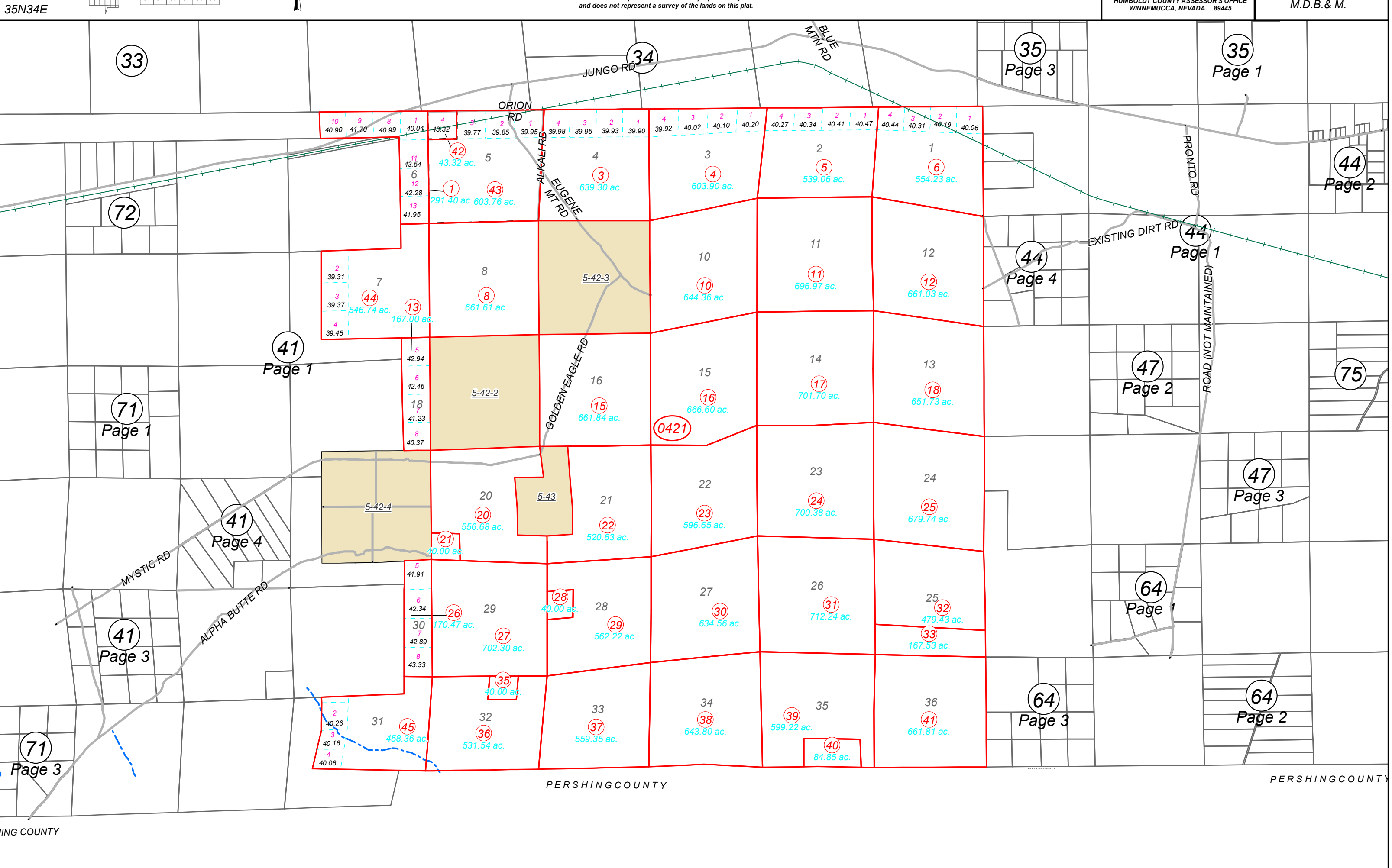
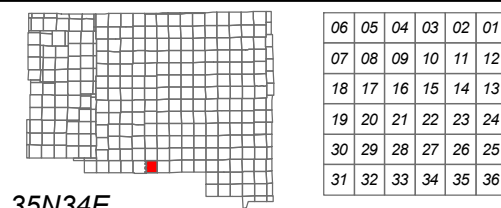
Map Prepared by:
HUMBOLDT COUNTY ASSESSOR'S OFFICE
WINNEMUCCA, NEVADA 89445

5-42

Page 1 of 4

1"=4,000'

M.D.B. & M.



35N34E

ING COUNTY

PERSHING COUNTY